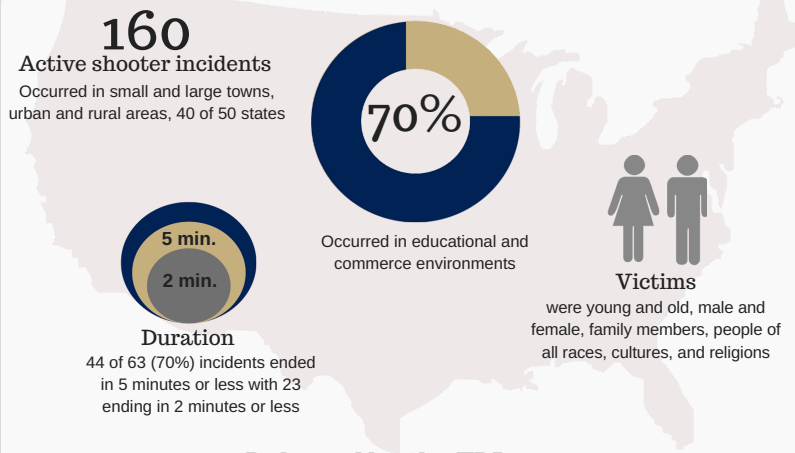


Active Gunman Emergency Response

Active Gunman on Campus



Released by the FBI:
"A Study of Active Shooter Incidents in the US Between 2000 and 2013"

Resources:

risk.byu.edu

- Emergency > BYU Emergency Plan

police.byu.edu

- Crime Prevention > Active Gunman Preparedness Training
 - Flash Point Video
 - Shots Fired Informational Videos
 - Y Alert Video

How to Respond when Law Enforcement Arrives

- Remain calm, and follow officer's instructions
- Immediately raise hands and spread fingers
- Keep hands visible at all times
- Avoid making quick movements toward officers such as attempting to hold on to them for safety
- Avoid pointing, screaming, and/or yelling
- Do not stop to ask officers for help or direction when evacuating, just proceed in the direction from which officers are entering the premise

Information to Provide Law Enforcement

- Location of the victims and the active shooter
- Number of shooters, if more than one
- Physical description of shooter(s)
- Number and type of weapons held by the shooter(s)
- Number of potential victims at the location

Recognize Signs of Potential Workplace Violence

An active shooter may be a current or former employee. Alert the HR department if you believe an employee exhibits potentially violent behavior. Indicators of potentially violent behavior may include the following:

- Increased use of alcohol and/or illegal drugs
- Unexplained increase in absenteeism, and/or vague physical complaints
- Depression/Withdrawal
- Increased severe mood swings, and noticeably unstable or emotional responses
- Increasingly talks of problems at home
- Increase in unsolicited comments about violence, firearms, and other dangerous weapons and violent crimes

Additional Info and Training

For additional information and training go to:

- www.dhs.gov/active-shooter-preparedness

Suggested Training:

- IS-907 Active Shooter: What You Can Do

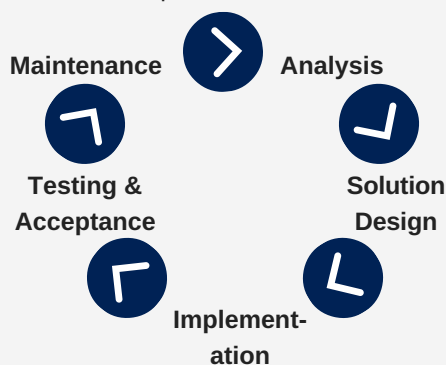


General Information: What you can do

Other Emergencies

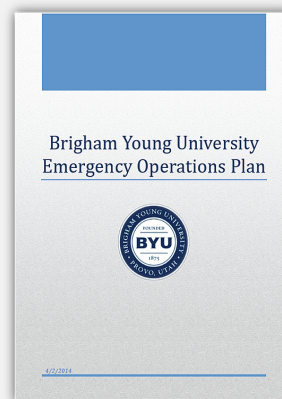
Continuity Plan

A business continuity plan is a plan to continue operations when a business or organization is affected by a disaster. A business continuity plan is essential and includes strategies to overcome the disruption of business.



Additional Resources found at: Ready.gov

risk.byu.edu >



Preparing for an Emergency

- Community Emergency Response Team
- Food Storage
- 72 Hour Kits
- Earthquakes in Utah
- First Aid Kits
- First Aid & CPR Class
- Winter Storms/Extreme Cold
- Preventing of Illness (Flu, Pandemic, Etc)
- Lightning Storms
- Heat Related Injuries

providentliving.lds.org > Emergency Preparedness

- Emergency planning worksheets
- Preparedness information
- Creating an emergency plan

